

TORAY

TR-8000

優 **"YUGA"**
雅

Creating
"Tenderness" and
"Relaxation"





優雅

TR-8000 "YUGA"

Supported by the advanced technologies of Toray, the TR-8000 "YUGA" offers comfortable dialysis to patients and easy operation to staff members.

"YUGA" means "Grace", "Tenderness" and "Relaxation" in Japanese.

Large vertical display

Easy viewable 10.4 inch touch panel display offers reliable and friendly operation for treatments. Background color of display changes at each dialysis step. At a glance operator can see what dialysis step is going on. Icons on the operation screen can be designed according to actual treatment at each user site.

Various profiles

Various profiles, such as ultrafiltration rate, conductivity, blood flow rate and heparin infusion rate can be freely designed.

Various dialysis chart

Progress of arterial/venous/dialysate pressure, TMP and conductivity can be monitored on the display by graphical chart.

Advanced alarm display

When alarm condition, probable cause and necessary action are displayed to assist the operator.

Alarm History can be checked on the display.

Various functions support to realize more safe treatment.

Maintenance assist

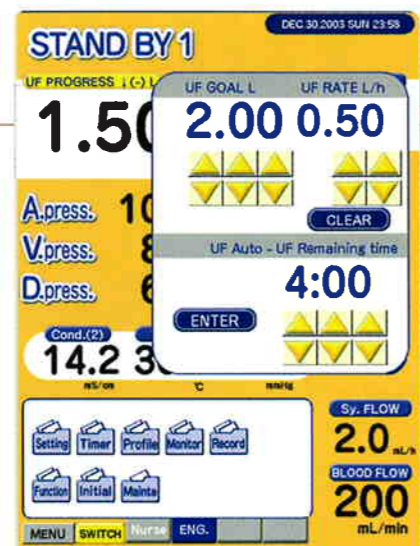
Operation of each function and component can be checked on maintenance window.

Various options

Various options, such as On line HDF, Automatic BPM, Single needle (double pump) expand the range of choices for dialysis treatment.

Main operational and monitoring displays

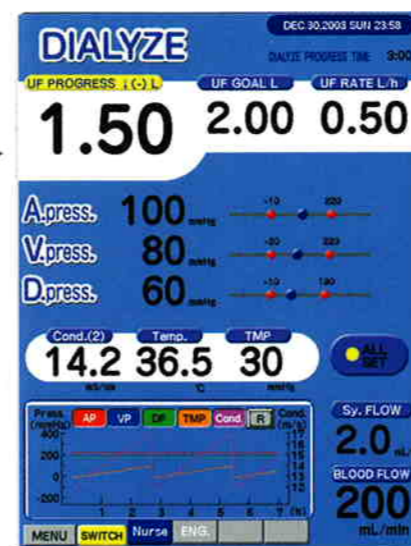
Mode



1 Stand by Mode



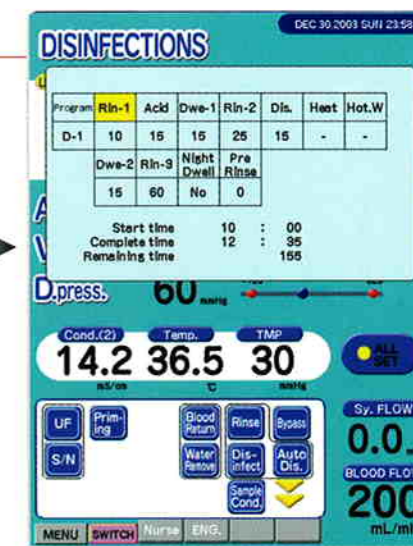
2 Stand by OK Mode



3 Dialyze Mode

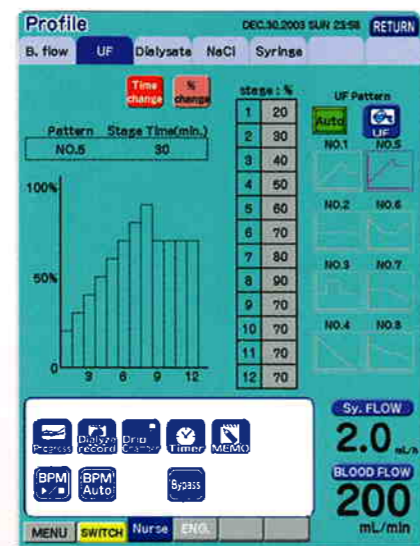


4 Stop Mode

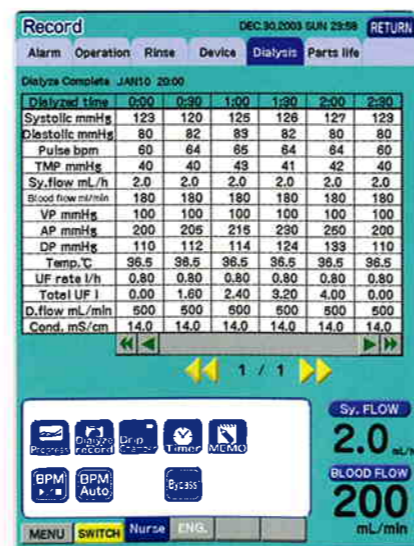


5 Rinse/Disinfection Mode

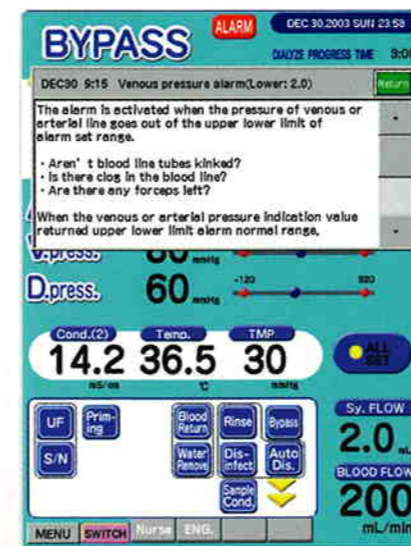
Function



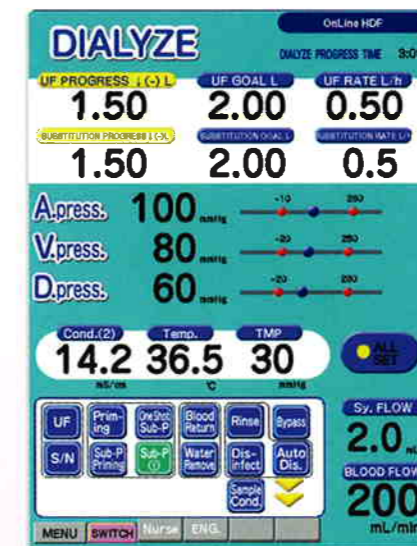
Conductivity/UF Profile



Monitoring Records



Alarm/Caution Guidance



On-Line HDF (Option)

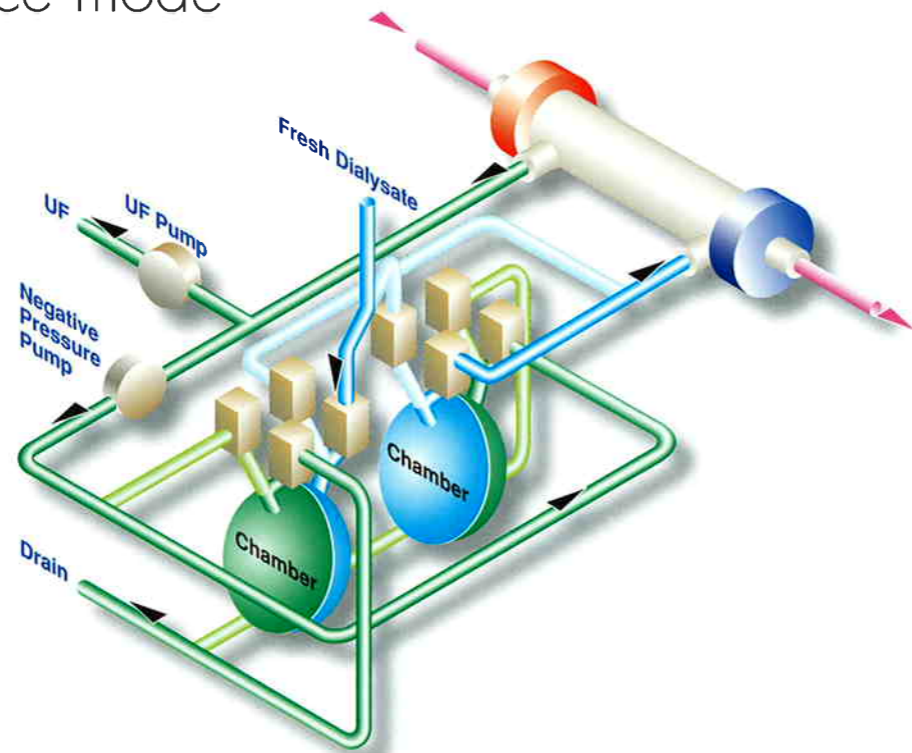


Blood Pressure Monitor (Integrated Type, Option)

優雅

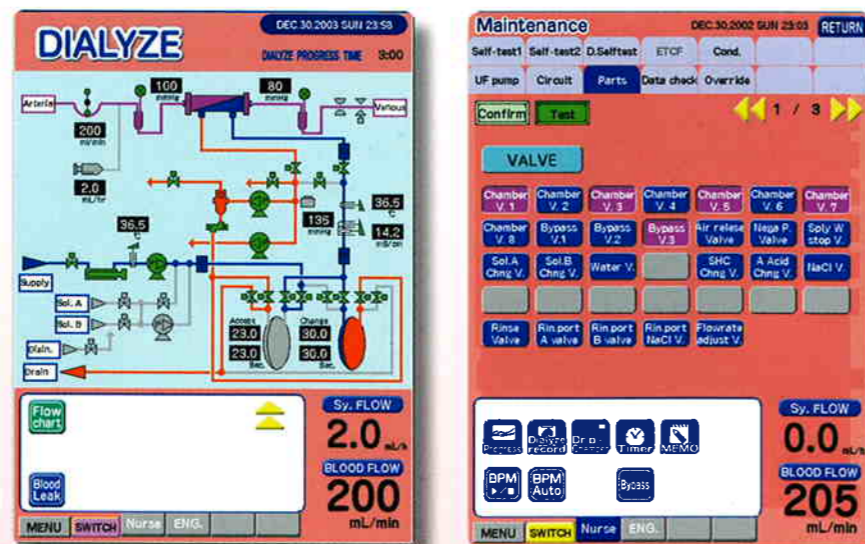
TR-8000 "YUGA"

TORAY's Reliable Volumetric UF Control (Closed circuit system) & Improvement of maintenance mode



The UF control of the TR-8000 "YUGA" is supported by a "Closed circuit system" to ensure the accurate removal of excessive fluid. Originally invented and developed by Toray, this system has been accepted worldwide as the most reliable technology for UF control.

The primary characteristic of each chamber has a silicone membrane to separate fresh and used dialysate. These two chambers alternately prepare fresh dialysate and discharge the used one, continuously keeping the dialysate circuit closed. As the pre-determined quantity of UF will be drawn from such closed circuit, the targeted removal of excessive fluid is accomplished.



Maintenance Window
Operation of each component and indication value is displayed on maintenance window.

Technical Data



Safety Design

- Disinfectant shortage alarm
- Patrol lamp (4 colors)
- Melody alarm
- Self-test of hydraulic line
- Detailed alarm indication on TFT screen
- TMP monitor/TMP alarm
- Compliance with EMC (electromagnetic compatibility) requirements

Various Options

- Blood pressure monitor
- Data communication connector
- Hot water disinfection
- Double pump single needle
- Nurse call
- Holder for endotoxin cut filter
- Priming funnel
- On-Line HDF
- NaCl infusion profile

Specifications

General

Power supply:	Single phase 115V, 230V, ±10%, 50/60 Hz
Max. power consumption:	1.5 kW
Dimensions (W x H x D):	approx. 320 x 1,342 x 375 mm
Weight:	approx. 75 kg
Supply water pressure:	0.1 to 0.3 MPa
Supply water flow:	more than 800 mL/min
Temperature of Supply water:	10 to 30°C
Quality of supply water:	Equivalent to or better than AAMI standards

Range of dialysate temperature regulation:	30 to 40°C
Range of dialysate flow regulation:	300 to 700 mL/min (max 800 mL/min on rinse mode)
Range of UF rate regulation:	0, 0.01 to 5.00 L/hr
Range of dialysate conductivity regulation:	Acetate dialysis and Bicarbonate dialysis: 13.0 to 18.0 mS/cm in 9 steps of approx. 0.3 mS/cm
Range of blood flow regulation:	8.0mm*: 0 to 600 mL/min 6.5mm*: 0 to 400 mL/min *Inside diameters of blood tubing line.
Range of syringe flow regulation:	0 to 9.9 mL/hr (with super rapid S/W)
Available syringe size:	10 mL/20 mL/30 mL
Air bubble detector:	Ultrasonic detection system (Drip chamber type)
Blood leak detector**:	Photoelectric detection system
**Sensitivity:	500 ppm (Ht. 32% and 37°C)
Disinfection:	with chemicals (5% of sodium hypochlorite and/or 30% of acetic acid.)

Monitor section

Dialysate temperature indicator:	0 to 99.9°C
Dialysate flow indicator:	400 to 600 mL/min
Venous pressure indicator:	-200 to +400 mmHg
Arterial pressure indicator:	-200 to +400 mmHg
Dialysate pressure indicator:	-400 to +400 mmHg
UF rate setter:	0.00 to 5.00 L/hr
UF goal setter:	0.00 to 40.0 L
Total UF volume indicator:	0.00 to 40.0 L
Blood flow indicator:	0 to 600 mL/hr
Syringe flow indicator:	0 to 9.9 mL/hr

Others

- Specifications and designs are subject to change without notice for improvement.
- The instruction manual must be read thoroughly prior to the use of this system.

'TORAY'



EU Representative:

Toray Europe Ltd.

Medical Department

7, Old Park Lane, London W1K 1AD, U. K.

TEL: (+44)20 7663 7745 FAX: (+44)20 7872 8071 E-MAIL: MD1@toray-tel.co.uk

Exporter/Manufacturer

Toray Medical Co., Ltd.

International Division

ARCA Central 21F., 2-1, Kinshi 1-chome, Sumida-ku, Tokyo 130-0013, JAPAN

TEL: (03)5610-6535 FAX: (03)5610-6545 E-MAIL: TMC_INTL_FL@tmc.toray.co.jp